



University of  
**CUMBRIA**

# NAVIGATING THE LIBRARY

## BRAMPTON ROAD CAMPUS



Where to ask questions.



Where to go to complete online classes or meetings.



Where to go to complete group work.



How to access any help you need.



How to find all the resources you may need.

Welcome to Brampton Road Campus! Let's go and visit the library.

This is the main entrance to Brampton Road Campus.



Just inside the door you will see the main reception for the building. You can ask any general questions to the friendly staff there.

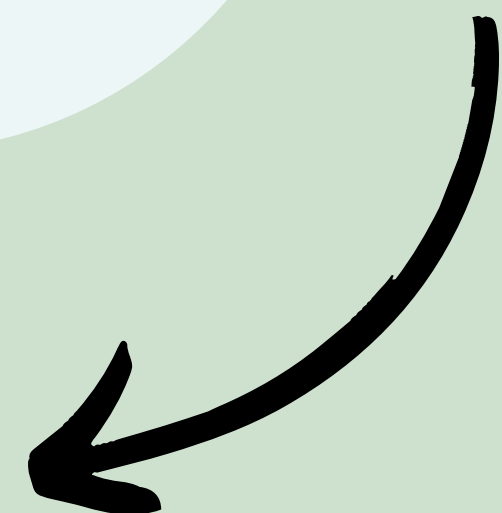
Opposite the main reception desk, you will find the lift and stairs to the canteen. You need to go up one level to go to the library.



When you leave the lift, or get to the top of the stairs, turn right. Walk to the end of the corridor following the wall art.

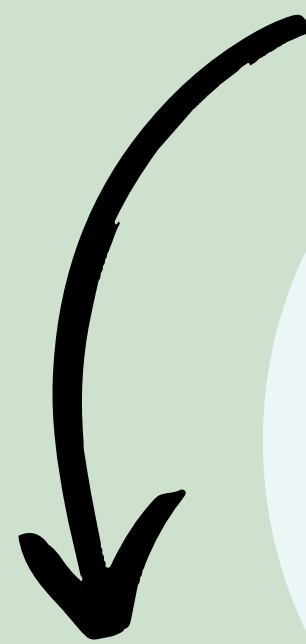
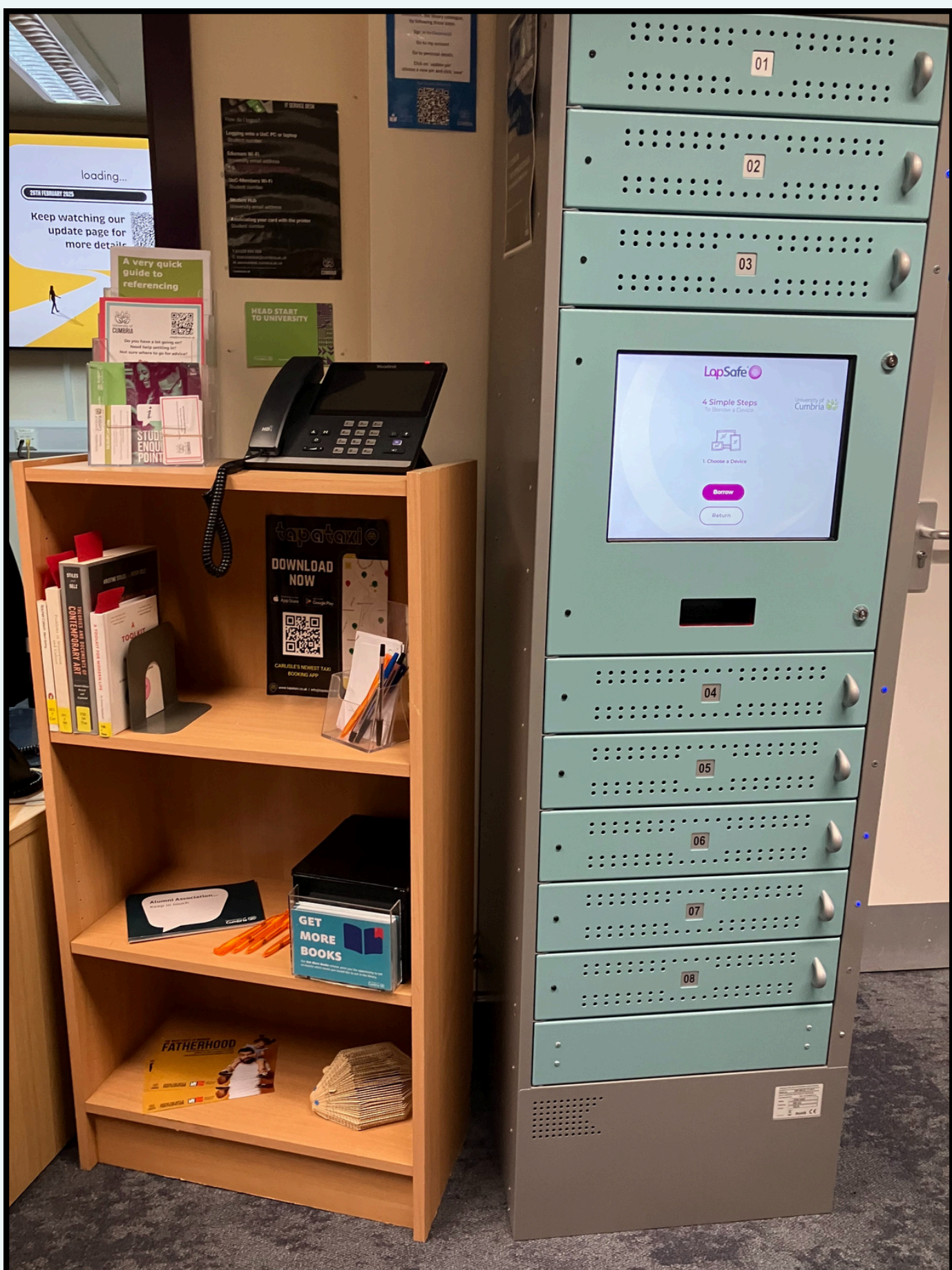


Follow the corridor round to the right. You will need to go down stairs or use the lift to go down one level



The library entrance is on the left-hand side. Use the button on the wall to open the door.

Go through the door into zone 1 of the library and you will see the library desk. You can ask our friendly library staff any questions that you have.



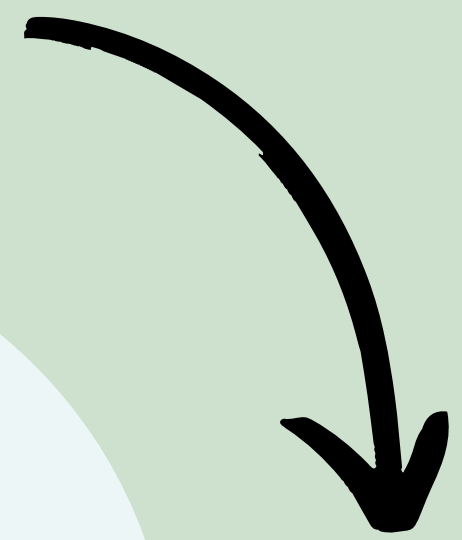
The reservation shelf is near to the library desk. You can collect any books that you have requested from this shelf and borrow them using the self service kiosk. There are laptops for you to borrow next to the reservation shelf.

There is a silent study room.



But if you prefer to work in a group there are study tables by the windows.

The main lending collection is in Zone 1. On the end of each set of shelves there is a list of topics in that section to help you find the books that you need. If you have any questions about finding books please ask at the library desk.



On the end of each row of books you will see a list of the topics that are covered in that section.



To take out a book you can use our self service kiosk. This is near the entrance door. You will need your Cumbria Card and PIN. Next to our Kiosk you will also see the printer and scanner.



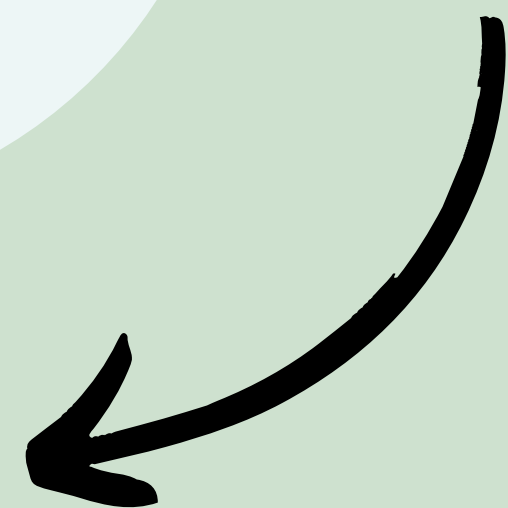
The latest editions of our journals and magazines are here for you to browse. There is a printer/scanner next to the journal shelves.





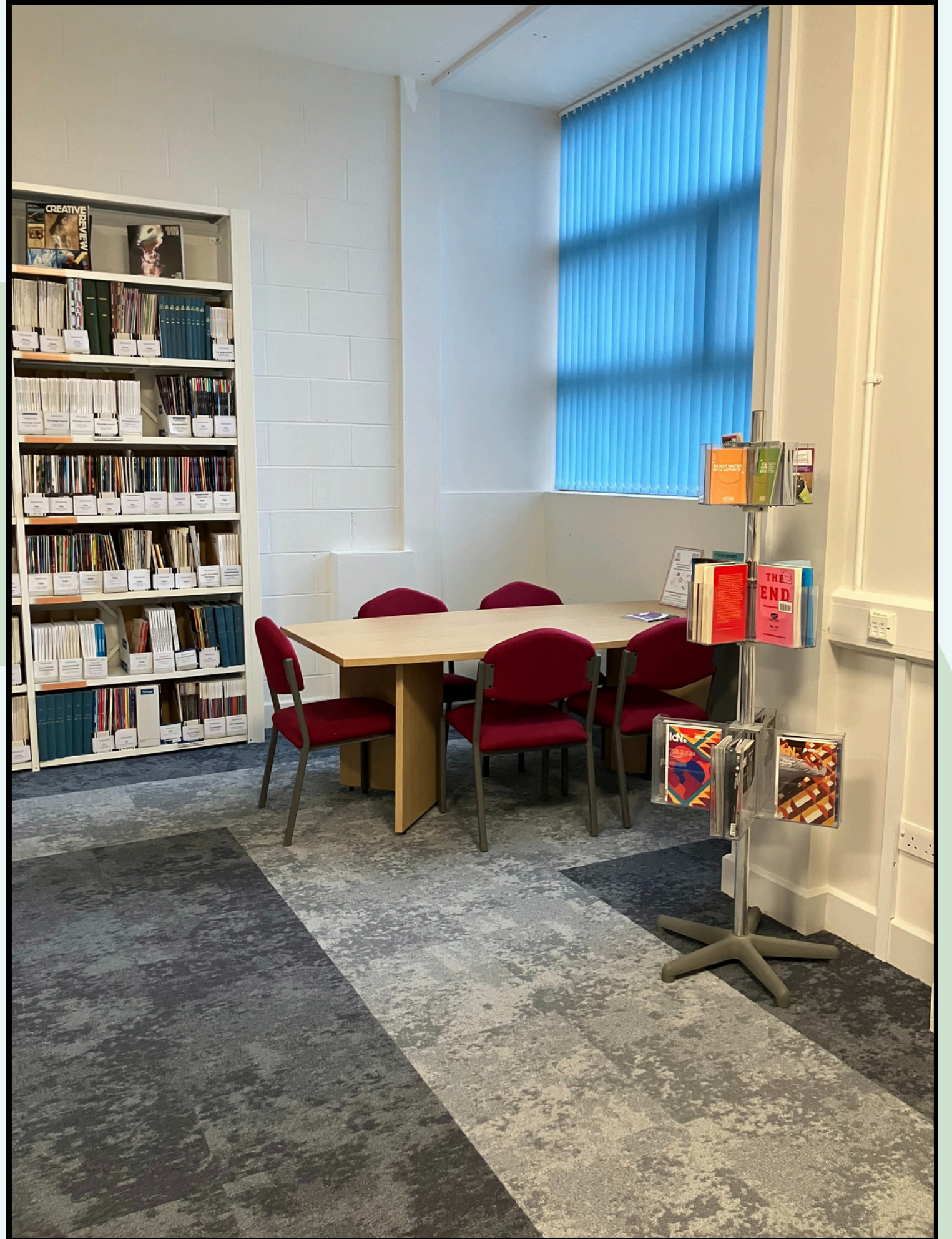
If you walk along the shelves of the new journals towards the back of the room, you will see some stairs. Go down these into **Zone 2** to find our journal archive and some sofa and study places.

There is an accessible entrance to zone 2 by exiting the entrance, turning left and taking the lift. There is a door on your left-hand side.



Relax on our comfy seating and flick through some magazines.

Or use the study tables



Zone 2 also has a kiosk to borrow books.