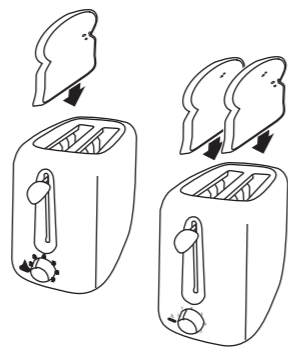


TOASTING BREAD

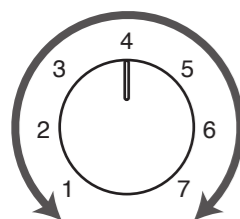
To prevent jamming do not use your toaster with torn slices of bread. Make sure the size and thickness of the bread slices fit easily into the toast slots. Always watch your toaster when in use. Never leave your toaster unattended.

1. Plug the mains plug into the mains socket.
2. Put 1 or 2 slices of bread into the bread slots.



- Remove all protective wrapping prior to putting the bread into the toaster.
- Avoid toasting the food with extremely runny ingredients such as butter.
- The bread slot is only applicable for toasting regular bread slices. Do not toast irregular sized bread.
- Make sure the crumb tray is completely inserted before use.

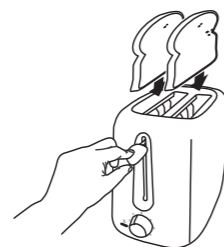
3. Select the level of browning by turning the Browning Control. There are 7-setting levels:



(1) Lightest (7) Darkest

- Select a lower position (i.e. 1 or 2) for light browning, especially for toasting only one slice or for dry (old) bread. Note that the toasting colour for one slice will be darker than that for two slices at the same level.
- If you have initially toasted some bread, the toaster elements will be hot, so when you put more bread into the toaster it may brown faster than the first slices that were toasted, even if the Browning Control is set to the same level.
- The higher the number for the browning level, the higher the chance of burning the toast.
- For optimum browning, always place the bread as close as possible to the centre of the slots.

4. Lower the toasting lever vertically until it clicks. The toaster will begin at once.



- Only when the toaster is connected to the mains power, can the toasting lever be locked in the downward position.
- During the toasting process, you may observe the toasting colour. Press the **CANCEL** button to cancel the operation at any time if you are satisfied with the colour.

5. Once the bread has been toasted to the preset browning level, the toasting lever will automatically pop up which means your toast is ready.

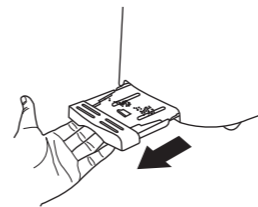
OTHER FUNCTIONS

Cancel

If the toaster starts to smoke, press the **CANCEL** button to stop toasting immediately.

REMOVING CRUMBS FROM THE TOASTER

1. Unplug the mains plug from the mains socket.
2. Slide the crumb tray out by holding the crumb tray handle.
3. Empty the crumbs into the bin and clean the crumb tray.



- Let the crumb tray dry thoroughly before reinserting it back into the toaster. Ensure the crumb tray is completely inserted before using your toaster again.
- The metal part may be hot.

HOW TO CLEAR A PIECE OF BLOCKED BREAD

1. Unplug the mains plug from the mains socket.
2. Allow the toaster to fully cool down.
3. Push and hold the toasting lever down then release.
4. Gently dislodge the blockage with a non-metallic object, for example the handle of a wooden spoon.

- Ensure you don't make contact with the heating elements, as you may damage them.

5. Lift the toasting lever to remove the blockage.

CLEANING AND MAINTENANCE

Unplug the mains plug from the mains socket and allow the toaster to cool down before cleaning.

Do not use harsh cleaners or solvents as they may damage the casing.

The body of the toaster should be cleaned using a cloth dampened with warm water. Make sure you do not allow water to seep into the controls or heating elements.

When not in use, the mains cable may be wound under the bottom of the toaster.

SPECIFICATIONS

Mains Supply: 220-240V ~ 50Hz

Power Consumption: 700W

Specifications may change without prior notice.



Team Knowhow

Help with all life's kit™

For general information about this appliance and handy hints and tips, please visit: www.TeamKnowhow.com/discover or call **0344 561 1234**

Partmaster
CO.UK

Visit Partmaster.co.uk today for the easiest way to buy electrical spares and accessories. With over 1 million spares and accessories available we can deliver direct to your door the very next day. Visit www.partmaster.co.uk or call 0344 800 3456 (UK customers only). Calls charged at National Rate.

DSG Retail Ltd. (co. no. 504877)
1 Portal Way, London, W3 6RS, UK

EU Representative

DSG Retail Ireland Ltd (259460)
3rd Floor Office Suite,
Omni Park SC, Santry, Dublin 9, Republic of Ireland

IB-C02TW17-190404V2

ESSENTIALS

2 Slice Toaster

Instruction Manual

C02TW17



Thank you for purchasing your new product.

We recommend that you spend some time reading this instruction manual in order that you fully understand all the operational features it offers.

Read all the safety instructions carefully before use and keep this instruction manual for future reference.

Currys PC World

SAFETY FIRST!

For your continued safety and to reduce the risk of injury or electric shock, please follow all the safety precautions listed below.

- Read all the instructions carefully before using the appliance and keep them for future reference.
- Retain the manual. If you pass the appliance onto a third party, make sure to include this manual.
- Check that the voltage marked on the rating label matches your mains voltage.

Damage

- Please inspect the appliance for damage after unpacking.
- Do not continue to operate the appliance if you are in any doubt about it working normally, or if it is damaged in any way - switch off, unplug the toaster from the mains and consult your dealer.

Location of Appliance

- This appliance is intended for indoor household use and similar applications such as:
 - farm houses and by clients in hotels, motels and other residential type environment;
 - bed and breakfast type environment;
 - catering and similar non-retail applications.
- Make sure the unit is earthed properly during use. Use of extension sockets are not recommended. If in doubt, contact a qualified electrician.

Temperature

- Avoid extreme degrees of temperature, either hot or cold. Place the appliance well away from heat sources such as radiators or gas/electric fires.
- Avoid exposure to direct sunlight and other sources of heat.
- Do not touch hot surfaces. Temperature of accessible surfaces may be very high when the appliance is operating. Let the appliance cool down completely before touching it. Keep children away.

Naked Flames

- Never place any type of candle or naked flame on the top of or near the appliance.

Moisture

- To reduce the risk of fire, electric shock or product damage, do not expose this appliance to rain, moisture, dripping or splashing. No objects filled with liquids, such as vases, should be placed on the appliance.
- If you spill any liquid into the appliance, it can cause serious damage. Switch it off at the mains immediately and unplug it.

Ventilation

- To prevent the risk of electric shock or fire hazard due to overheating, ensure that curtains and other materials do not obstruct the ventilation vents.
- Do not install or place this appliance in a bookcase, built-in cabinet or in another confined space. Ensure the appliance is well ventilated.

Safety

- The appliance is not intended to be operated by means of an external timer or separate remote-control system.
- Always disconnect the appliance from the mains supply before moving the appliance.
- In the interests of safety and to avoid unnecessary energy consumption, never leave the appliance unattended for long periods of time, e.g. overnight, while on holiday or while out of the house. Disconnect the mains plug from the mains socket.

- Bread may burn. Your appliance must not be used near or below curtains or other combustible materials. It must be watched when in use.
- Only toast bread in your appliance. Do not attempt to toast any pastry or bread product which is filled with a fruit or sugary filling (pop tarts etc). The stuffing may leak from the pastry or bread pocket and damage your appliance with the possible risk of a fire occurring.
- Oversize food, metal foil packages or utensils must not be inserted in the appliance as they may cause fire or electric shock.
- Do not attempt to dislodge food while the appliance is in use.
- Take the bread out carefully after toasting to avoid injuries.
- Do not use the appliance for anything other than its intended use.

Mains Cable

- Make sure the appliance is not resting on top of the mains cable, as the weight of the appliance may damage the mains cable and create a safety hazard.
- Do not let the mains cable overhang the edge of the work surface or allow it to touch hot surfaces or sources of heat or flame.
- If the mains cable is damaged it must be replaced by the manufacturer, its service agent, or similarly qualified persons in order to avoid a hazard.

Supervision

- This appliance can be used by persons aged from 8 years and above and persons with reduced physical, sensory or mental capabilities, or lack of experience and knowledge if they have been given supervision or instructions concerning the use of the appliance in a safe way and understand the hazards involved. Children should not play with the appliance. Cleaning and user maintenance should not be made by children unless they are older than 8 years old and are supervised.
- Keep the appliance and its cord out of reach of children less than 8 years old.
- Never let anyone especially children push anything into the holes, slots or any other openings in the case – this could result in a fatal electric shock.

Service

- To reduce the risk of electric shock, do not remove screws. The appliance does not contain any user-serviceable parts. Please leave all maintenance work to qualified personnel.
- Do not open any fixed covers as this may expose dangerous voltages.

Maintenance

- Ensure the appliance is unplugged before cleaning.
- Allow the appliance to cool completely before cleaning or storing.
- Do not use any type of abrasive pad or abrasive cleaning solutions as these may damage the appliance's surface.
- Do not use liquids to clean the appliance.



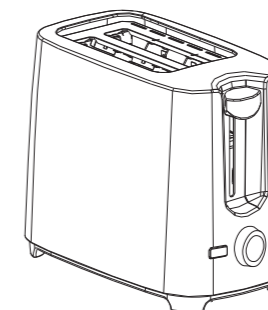
The symbol on the product or its packaging indicates that this product must not be disposed of with your other household waste. Instead, it is your responsibility to dispose of your waste equipment by handing it over to a designated collection point for the recycling of waste electrical and electronic equipment. The separate collection and recycling of your waste equipment at the time of disposal will help conserve natural resources and ensure that it is recycled in a manner that protects human health and the environment.

For more information about where you can drop off your waste for recycling, please contact your local authority, or where you purchased your product.

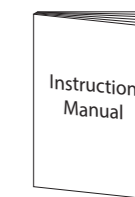
UNPACKING

Remove all items from the packaging. Retain the packaging. If you dispose of it please do so according to any local regulations.

The following items are included:



Main Unit

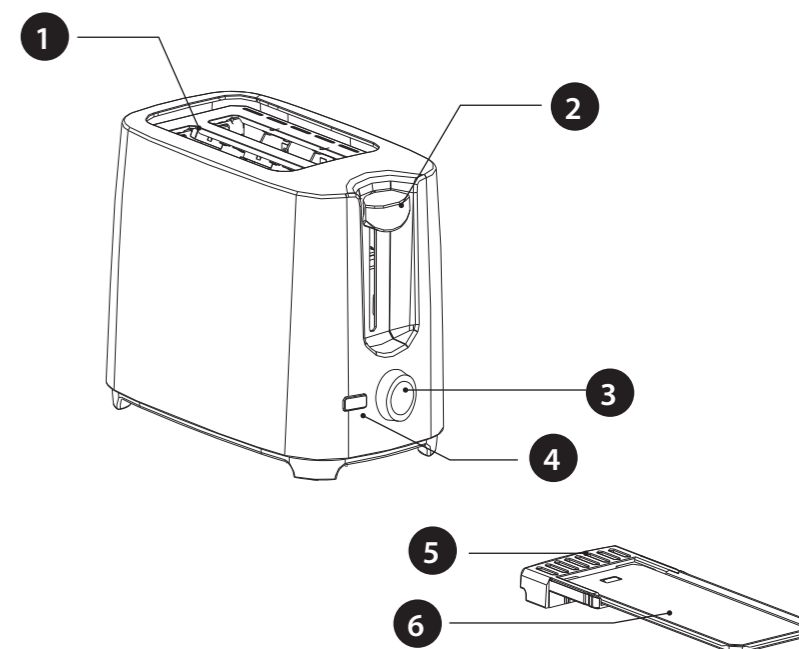


Instruction Manual



If items are missing, or damaged please contact Partmaster (UK only).
Tel: 0344 800 3456 for assistance.

PRODUCT OVERVIEW



1 Toast Slots

2 Toasting Lever

3 Browning Control

4 Cancel Button

5 Crumb Tray Handle

6 Crumb Tray

FIRST TIME USE

Please note there may be manufacturing residue or oil remaining in the toaster or heating element. Odour may be emitted the first time you use it. This is normal and will not occur after using your toaster several times. The first time you use your toaster we suggest that you operate it without bread.



The first time you use your toaster, we suggest that you operate it without bread.