

Thank you

for purchasing your new Kettle. We recommend that you spend some time reading this instruction manual in order that you fully understand all the operational features it offers. You will also find some hints and tips to help you resolve any issues.

Read all the safety instructions carefully before use and keep this instruction manual for future reference.

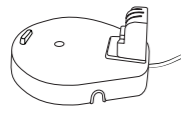
Unpacking

Remove all items from the packaging. Retain the packaging. If you dispose of it please do so according to local regulations.

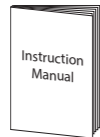
The following items are included:



Main Unit

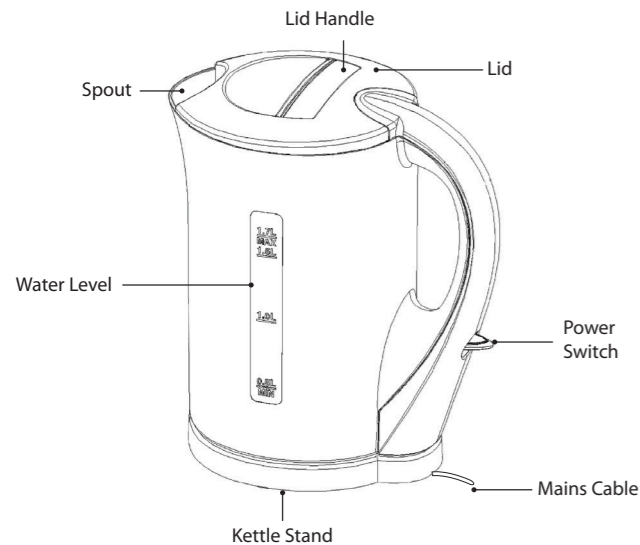


Kettle Stand



Instruction Manual

Product Overview



First Time Use

Clean your kettle by boiling a full kettle of water twice and then discarding the water.

Keeping the Mains Cable Tidy

Extend the mains cable in the kettle stand to the required length. Locate the mains cable in the slot in the stand. For safety it is recommended that the length of exposed mains cable is kept as short as possible.

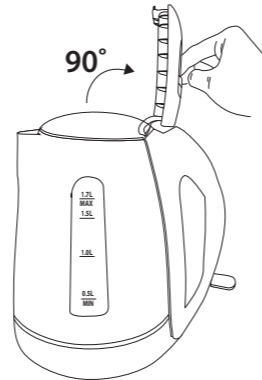


This kettle must only be used with the stand provided.

Filling the Kettle

Lift the lid handle.

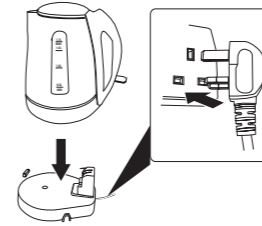
- Fill the kettle with the required amount of water.
- Do not exceed the maximum fill level (MAX. 1.7L) as indicated by the "MAX" mark on the interior of the kettle.
- Always ensure the kettle is filled passed the minimum fill level (MIN 0.5L)
- Gently push the lid closed.



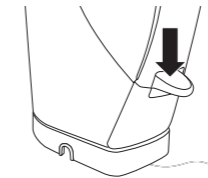
If the kettle is overfilled, boiling water may be ejected from the spout and cause scalding.

Switching On

1. Place the kettle on its stand. Connect the stand's mains cable to the mains socket.



2. Push the power switch down to turn on the kettle.



3. The indicator on the side of kettle will light up to indicate that the kettle is heating.



- Never open the lid while the water is boiling. The steam coming out from the kettle is very hot.
- If there is insufficient water in the kettle, the automatic safety cut-out will operate. If this happens, allow the kettle to cool for 10 minutes before refilling with cold water and re-boiling.

When the Water has Boiled

The kettle will automatically switch off.



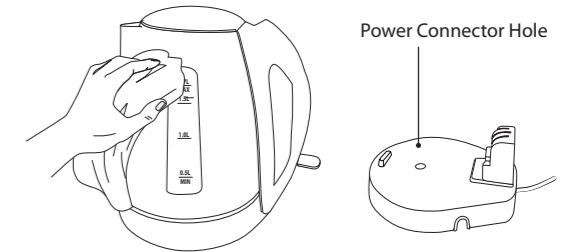
- Ensure that the switch is not obstructed and the lid is firmly closed. The kettle will not turn off if the switch is obstructed or if the lid is open.
- After removing the kettle, there may be some water on the surface of the stand. This is condensation from the steam causing the kettle to automatically switch off after boiling. This is normal and should not be a cause for alarm.

Cleaning the Kettle

The kettle exterior should be cleaned with a soft damp cloth. Do not use abrasive cleaners or scouring pads which may damage the finish of the kettle.

Remember to clean the filter at intervals.

Never immerse the kettle or the stand in water and always keep the electrical contacts and the power connector hole dry. Always disconnect from the mains before cleaning the stand.



Do not insert any foreign objects or allow any liquid to spill into the Power Connector Hole.

Descaling the Kettle

Depending on the hardness of the water in your area, limescale may be deposited on the heating element and the inside of the kettle. This normal build-up is not harmful to health but an excessive amount of scale may affect the performance of the kettle.

To descale, fill the kettle with distilled water up to three-quarters of the Max level and bring the water to boil. After the kettle has switched off, add a descaling solution following the manufacturers instructions. Never attempt to descale the kettle by chipping or scraping with a sharp implement.

Alternatively, you can fill the kettle with 3 cups of white vinegar. Add water to cover the bottom of kettle completely. Leave the water in the kettle overnight. Do not boil.

Empty the solution from the kettle. Any stains remaining in the kettle can be removed by rubbing with a damp cloth.

Fill the kettle with clean water to maximum level, bring to boil and then discard the water. Repeat and the kettle will be ready to use.

ESSENTIALS INSTRUCTION MANUAL

KETTLE C17JKW17



currys

Thank you for purchasing your new Currys Essentials Kettle. We recommend that you spend some time reading this instruction manual in order to fully understand all the operational features it offers.

Read all the safety instructions carefully before use and keep this instruction manual for future reference.

Safety Warnings

For your continued safety and to reduce the risk of injury or electric shock, please follow all the safety precautions listed below.

- Read all the instructions carefully before using this appliance and keep them for future reference.
- Retain the manual. If you pass the appliance on to a third party, make sure to include this manual.
- Unplug the appliance from the mains socket when not in use, or before cleaning any part of the appliance.
- Allow the appliance to completely cool down before cleaning.
- Never immerse the appliance in water and always keep the electrical contacts dry.
- Never place the appliance on or near a source of heat such as a cooker ring or gas flame.
- Always place the appliance on a dry, flat and stable surface.
- Avoid contact with the steam from the appliance's spout. Take care when pouring or refilling after boiling.
- To prevent from boiling dry, do not fill the appliance with water less than the minimum fill level as indicated on the appliance.
- Use the appliance to heat only water.
- Do not interfere with the normal working of the switch.
- Keep the appliance and its cord out of reach of children less than 8 years old. Children should be taught about the dangers of boiling water.

- This appliance can be used by children aged from 8 years and above and persons with reduced physical, sensory or mental capabilities or lack of experience and knowledge if they have been given supervision or instruction concerning use of the appliance in a safe way and understand the hazards involved. Children shall not play with the appliance. Cleaning and user maintenance shall not be made by children without supervision.
- Children should be supervised to ensure that they do not play with the appliance.
- If the mains cable is damaged it must be replaced by the manufacturer, its service agent, or similarly qualified persons in order to avoid a hazard.
- Do not let the mains cable overhang the edge of the work surface or allow it to touch hot surfaces or sources of heat or flame.
- This appliance is intended for indoor household use and similar applications such as:
 - farm houses and by clients in hotels, motels and other residential type environment;
 - bed and breakfast type environment;
 - catering and similar non-retail applications.
- Make sure the unit is earthed properly during use. Use of any extension sockets must have an earth connection.
- This kettle must only be used with the stand provided.
- If the kettle is overfilled, boiling water may be ejected from the spout and scald.

Specifications

Power Supply	220 - 240V
Power Consumption	1850 - 2200W

Features and specifications are subject to change without prior notice.



For general information about this appliance and handy hints and tips, please visit www.knowhow.com/knowledgebank or call **0344 561 1234**.



Visit Partmaster.co.uk today for the easiest way to buy electrical spares and accessories. With over 1 million spares and accessories available we can deliver direct to your door the very next day. Visit www.partmaster.co.uk or call 0344 800 3456 (UK customers only). Calls charged at National Rate.



The symbol on the product or its packaging indicates that this product must not be disposed of with your other household waste. Instead, it is your responsibility to dispose of your waste equipment by handing it over to a designated collection point for the recycling of waste electrical and electronic equipment. The separate collection and recycling of your waste equipment at the time of disposal will help conserve natural resources and ensure that it is recycled in a manner that protects human health and the environment.

For more information about where you can drop off your waste for recycling, please contact your local authority, or where you purchased your product.

DSG Retail Ltd. (co. no. 504877)
1 Portal Way, London, W3 6RS, UK

IB-C17JKW17-180906V2